



CUU
5TH QUARTER
CUU

First Annual Lu Ball Reunion
June 25, 2011
Gilbert Sports & Fitness Center

Lamplighter Foundation

PRAISE AND THANKSGIVING FOR KINGSMEN FOOTBALL

For the better part of 50 years the California Lutheran University Kingsmen have had a rich heritage and fabled success. It is right and fitting to pause in a moment of tribute to the many people from different walks that have cheered on the Kingsmen program. We are thankful to the Alumni 5th Quarter leadership. Almost 1400 former players are a remarkable group. This event is to focus on a variety of personal stories and contributions and move toward the future.

This whole concept was originally to be in 2012, with time and planning to insure its success. As events unfolded, the leadership corps, spearheaded by Bob Trevathan, Class of 1966, a former CLU Regent and successful business man said "Let's do it now". Thank you all for being participants and laying the ground-work.

After the "transition years" began at CLU Coach Bob Shoup was blessed with a host of wonderful opportunities that included the University of New Mexico, Molokai Highlands Golf, UCLA, Santa Paula High School, Ventura College, Thousand Oaks High School, the Lamplighter Foundation, Royal High School, Carlsbad High School, and the Winterthur Warriors of Switzerland. These experiences are great memories. None measure up to building the program at CLU.

Please note that this will be the first of many 5th Quarter events. We will strive for better communication and fostering the loyalties of the past. We will also honor our "Fallen Kingsmen" at each event. Thanks to the "Blue Slipper" group we can share on a regular basis. We hope these groups can be a pioneer for other support activities and other venues. Get informed and get involved.

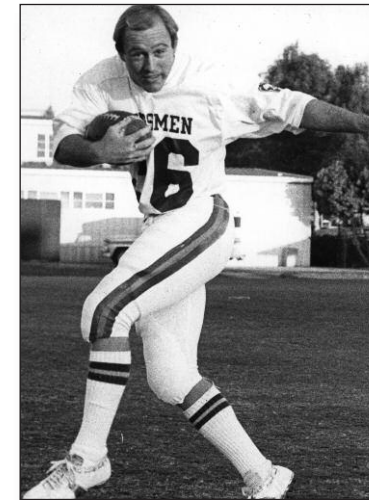
The Shoup family is pleased to continue its support of the CLU annual fund, and the Hall of Fame and the 5th Quarter and the Orville Dahl Society. We encourage all to be multi-faceted in giving as you are able.

This page is sponsored by George Engdahl, The Lamplighter Foundation, and the family and friends of Coach Robert Shoup.



Lamplighter Foundation

"The Mission of the Lamplighter Foundation is to provide funding to nonprofit organizations that desire to strengthen their governance, administration and leadership."



Master of Ceremonies
Hank Bauer

Program

Introduction of our Host: Hank Bauer
Jim Kallas: Greetings & Invocation
– *Dinner* –
Lu Ball through the Ages Highlight Film
Chris Kimball & Ben McEnroe: Presentation of the Garrison Trophy
Mike Sheppard: Reflections on 1971
Gene Uebelhardt: Jim Bauer.
Robert Shoup: 5th Quarter
Tom Farmer: Captain Kazoo
Scott Squires: "Transition to the SCIAC"
Ben McEnroe: THE NEW KINGSMEN STADIUM
Bob Trevathan: The Challenge
Closing: Reverend John Spann and Florence
Social Hour continues until 10:00 pm

Menu

HORS D'OEUVRES RECEPTION – 6:00PM TO 7:30PM

- Pot Stickers
- Assorted Mini Quiche
- Individual Crudities and Dip
- Chips and Salsa

Note: There will be a cash bar serving beer and wine.

SERVED DINNER – 7:30PM TO 8:30PM

Entrée Choice of:
Chicken Piccata

Boneless breast of chicken lightly sautéed and served in a light lemon sauce with capers.

Vegetable Napoleon

Vegan Napoleon with Portobello mushroom, eggplant, peppers, zucchini and yellow squash.

- Caesar Salad
- Long Grain and Wild Rice
- Green Beans with Almonds
- Cheesecake with Strawberries

Committee

THE 5TH QTR LEADERSHIP COMMITTEE

Gail and Gary McGinnis	Bob and Nancy Trevathan	Ragnar Storm-Larson
Thomas W. Farmer	Bob and Laura Davis	Hank Bauer
Gene and Kim Uebelhardt	Ernie and Jean Sandlin	Kindred Associates
Mike and Cathie Sheppard	David Spurlock	George Engdahl
Bob and Helen Shoup	Fred and Melanie Kemp	Dr. James Kallas
Bruce Thomas	Rick and Victoria Shoup	Jesse Matlock
Bill and Cheryl Swiontowski	Gerald and Judy Halweg	Donald A. De Mars
	Jim Thompson	

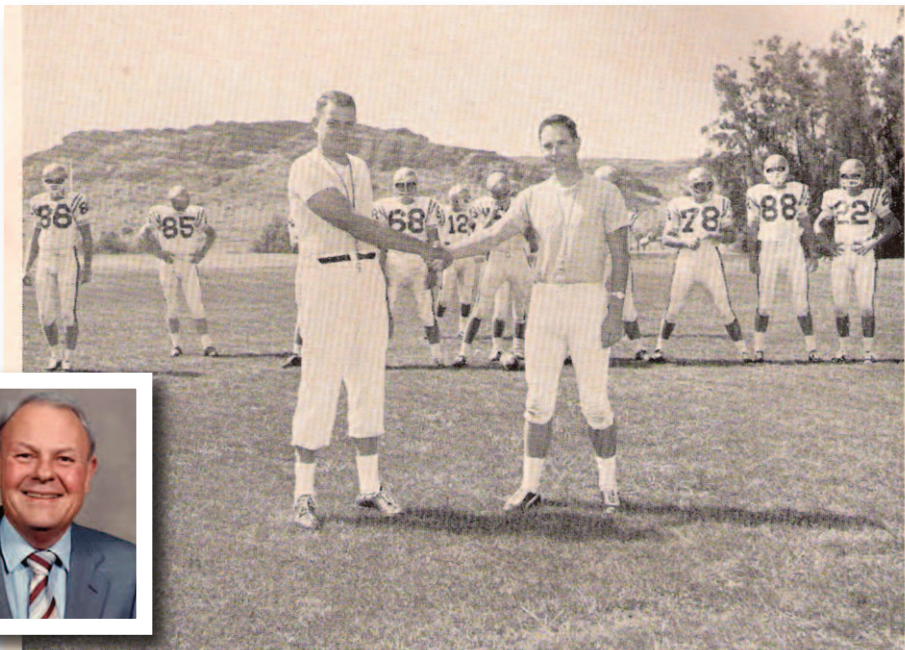
TABLE SPONSORS:

Bob Trevathan, Bob Davis, David Festerling, Curt Amundson, Dave Spurlock, Tom Bonds, Dr. Al Leland, The Lamplighter Foundation, Ragnar Storm-Larson Co., Thomas W. Farmer, Gerald Halweg, Shoup Family, Clausen Family, Wells Fargo Bank.

Don Garrison

Coach - Wrestling/ Football
Hall of Fame Class of 2003
CLU 1964-1978

The founder of the wrestling program at California Lutheran College, Don Garrison coached the Kingsmen to a 46-21-2 record from 1965 to 1969. During his stint as head of the wrestling team, he led CLU to three consecutive NAIA District 3 championships (1967, '68, '69). He was named NAIA District 3 coach of the year in 1968 and '69. Garrison was also defensive coordinator for the CLU football team from 1964 to 1978, including the 1971 NAIA Division II National Championship team.



CALIFORNIA LUTHERAN Coaches Don Garrison, left, and Bob Shoup, right, wish each other luck in the 1964 Kingsmen football season. The pair started out right by grinding out a 13-8 victory over La Verne here last week.



For Extra Points

Cal Lutheran kicker George Engdahl will be trying to provide that extra margin tomorrow when the Kingsmen visit Claremont-Mudd. Holder Mike Cox, last week's CLC "Player of the Game," award, will see lots of action at halfback.

The Beginnings



By George Engdahl

When Richard Pederson, the farmer who owned the land on which CLU was developed, responded to Orville Dahl's, CLU's first president, knock on his door, in 1957, he said "I have been expecting you." In providing the land, Pederson's goal was simple: "I want to provide youth with the benefits of a Christian education in a day when spiritual values may well decide the course of history." Since that time CLU has never wavered. Expecting great things has always been at the core of CLU and it has remained steadfast in defining and being faithful to its spiritual values.

Orville Dahl wasted little time in making the development of a first class athletic program a high priority in CLU's first year. He hired a visionary athletic director, Luther Schwich, and then set about the task of recruiting Coach Shoup as the University's founding football coach. Coach Shoup in turn brought with him Don Garrison, who was not only a successful and charismatic coach in his own right, but like Shoup a person of deep personal faith. The Shoup's (Bob and Helen) arrived on the campus in the spring of 1962 and immediately set about the task of recruiting the first football team. Along the way he recruited a couple of faculty members, James Kallas, and Robert Hague to help him. Hague was also a Dean at the college. Both of these men became legends in their own right with regard to the development of the football program and the academic tradition of the University.

In the fall of 1962 the first scraggy recruits showed up. There were no fields on which to practice. The gym was under construction, so Beta Hall, the men's residence hall at the time, served as the locker room until Mountclef Hall was finished that same fall. We started with two a days. There was no hot water in the residence hall. The practice field was a small grassy area located where Alumni House (the Pederson home) is now located. Eventually we were able to practice at Camarillo High School. Getting to practice in the bus af-

fectionately called "The White Tornado" and driven by Norm Denison, was an adventure in survival in and of itself.

While the first team began its inaugural season with no home field, Orville Dahl, Bob Shoup, and representatives from the Los Angeles Times, were able to attract a new NFL team, the Dallas Cowboys, to the campus for their summer camp. Working with the Cowboys, the University was able to fast track the development of better locker room and training facilities as well as the creation of the first home field and adjacent practice fields on the north campus. For the next 26 years these two organizations, the CLU Kingsmen, and the Dallas Cowboys, grew into very competitive and nationally recognized teams. Each team reached the pinnacle of



competition by winning their own versions of the national championship. The Cowboys helped put the city of Dallas on the map, and Kingsmen football helped to promote and develop brand identity for this new fledgling university in the southwest. Tom Landry was a man of faith and high spiritual values as was coach Shoup and coach Garrison. In fact the "Letterman's Club" as such organizations were called in those days, was named Chi Alpha Sigma, "Christians, Athletes, Scholars." Perhaps Chi Alpha Sigma can become a part of the foundation, history and tradition of The 5th Quarter.

The first season (1962) was the launching of the CLU football program. It was a bare bones program. There was no nickname or fight song. Facilities were limited at best. There was no home field, or a strong student and community following. Those things were being developed on the fly, or sometime in the future. However, in the great CLU tradition, players, coaches and students didn't know what they didn't have. The team's 1962 record 3-4, wasn't as important as commitment and dedication of those first players and coaches. Most of the players came from very competitive high schools and community college programs. They were used to winning and having great facilities, traditions, a fight song, a band and cheerleaders backed by a large and faithful student body that had come to the same home field for years. In 1962 neither the Cowboys nor the Kingsmen had any of those amenities, but it didn't matter. CLU players and those students and faculty were affectionately called pioneers. They pioneered. That's what they did. They laid the groundwork, they had high expectations and they established the mantra for a winning tradition that continues to this day.

Let's thrive! Thrivent Financial for Lutherans



What makes us different is what makes us strong.

We're a faith-based, not-for-profit financial services organization with approximately 2.6 million members. For more than a century, our blend of financial expertise, shared values and outstanding service has set us apart. To learn more, call today!

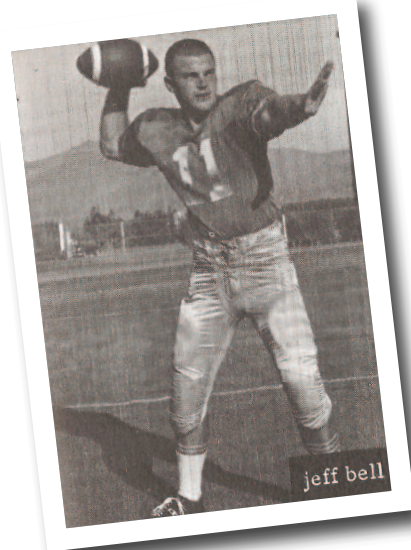
Southwest Regional Financial Office
5855 Topanga Canyon Blvd, Ste 210
Woodland Hills, CA 91367
800-490-5433 toll-free

For additional important disclosures information, please visit Thrivent.com/disclosures.

25640GEN R1-11

Thrivent.com

201008489



First game at Mount Clef Stadium 1972

The Blue Slippers

Early in the 1964 season at then California Lutheran College, the three-year-old football program reached its lowest ebb. Going in to the season, the young Kingsmen had won eight and lost eight after two seasons of suspect competition. Now, after a stunning 13-8 win over La Verne College, CLC was in the midst of a depressing losing streak. We lost to Occidental 28-7, were blanked by Southern Utah 26-0 and humiliated by Claremont- Mudd 28-13. The next game was to be our longest road trip to play a tough Colorado College team, and it was their homecoming game. In early October, the team flew into Colorado Springs and was met by an old city transit bus. We were taken to the edge of town to a very tired, single-story motel. The extra bags were put in the garage storage area among beat-up furniture, lost-and-found articles and miscellaneous hotel supplies. It had been a very long day, and we were tired and did not have much spirit or enthusiasm. We had eaten on the plane so the next order of business was to get back on the bus and go five miles downtown where the campus was located for a practice session. Many had to stand on the crowded bus. The college was on a beautiful site and the leaves had begun to change on the trees. We got off the bus below campus at the stadium field level in our game uniforms. The air was crisp and clean. As we began to loosen up and go through a light practice, our spirits began to rise and a vocal camaraderie to assert itself. We were not intimidated but were like school kids on an outing. This scene was then overshadowed from above with band music and cheers. Colorado College was having its homecoming pep rally. Clearly we could hear from the PA system that this team



from California is in the midst of a losing streak and we have beaten them before and we expect them to be an easy opponent. With that, the Kingsmen began to shout and cheer and the entire Colorado College student body and alumni came over to the edge of the stadium to see what was going on.

The next day was fabulous. Sunny, but cool. We loaded up our gear and went to the college to tape and dress for the game. Somehow, with our gear, we collected an old pair of tattered blue bedroom slippers. They went into the locker room. The game was a smashing 29-6 rout of the surprised Colorado team. After the game was over as the gear was collected, the slippers got put back in the laundry bag. That night, the game was broadcast as a tape delay on the black and- white TV sets in our hotel rooms. Coach Don Garrison and I both remarked how spirited the team looked and what a transformation had taken place. Something was clearly different. The rest of the trip was wonderful. Early Sunday morning, we went by train and bus to the Grand Canyon, took a sunset flight from there to Las Vegas, had a great buffet and then flew home.

The slippers went on top of the lockers with the lost and found. No one claimed them. The next week, CLC routed George Fox 59-0. We then won 33-9 over Cal Tech and 14-8 over a tough Cal State team. The following week, we went to Pomona but the slippers stayed home and we lost 14-8. The last game was our Homecoming, and we beat UC Riverside 7-0. The slippers became the responsibility of the team captain after that. They also got tied together with a white shoelace and hung up for everyone to see and touch. During the next 10 years, CLU won eight state championships and a national title in 1971. In 1975 the CLU Kingsmen were the #1 rated team in both the NAIA Division II and the NCAA Division III.

- Reprinted from the Kingsmen Quarterly

TILE INSTITUTE of AMERICA



Congratulations on the development of the "5th Quarter Football Club", for the enjoyment of the Football Teams (Past & Present), Parents and all the Fans, who have a love of California Lutheran University.

Judy & Jerry Halweg have donated to CLC, now CLU, because we were asked, by great people, at our Alma Mater, like Coaches Shoup, Squires and McEnroe.

A person did not have to be a football player for their talents and gifts to be received, loved and sincerely appreciated. We enjoyed employing many of the past football players over the decades, each year, at our annual tile seminars. The men expressed their appreciation and thus became like sons to us.



We want to thank Steve Bogan, for his help, with the design of the mural.

We wish our current Kingsmen much success, in the coming year and enjoyment in our new William Rolland stadium.



Gerald M. Halweg, CTC, CSI
1262 Bouquet Circle
Thousand Oaks, Ca. 91362

Bus: (805) 371-TILE (8453) Cell: (805) 444-TILE (8453)

Fax: (805) 371-8455 E-mail: DoctorTile@aol.com



FOR 34 YEARS
STORM-LARSEN & COMPANY, INC.

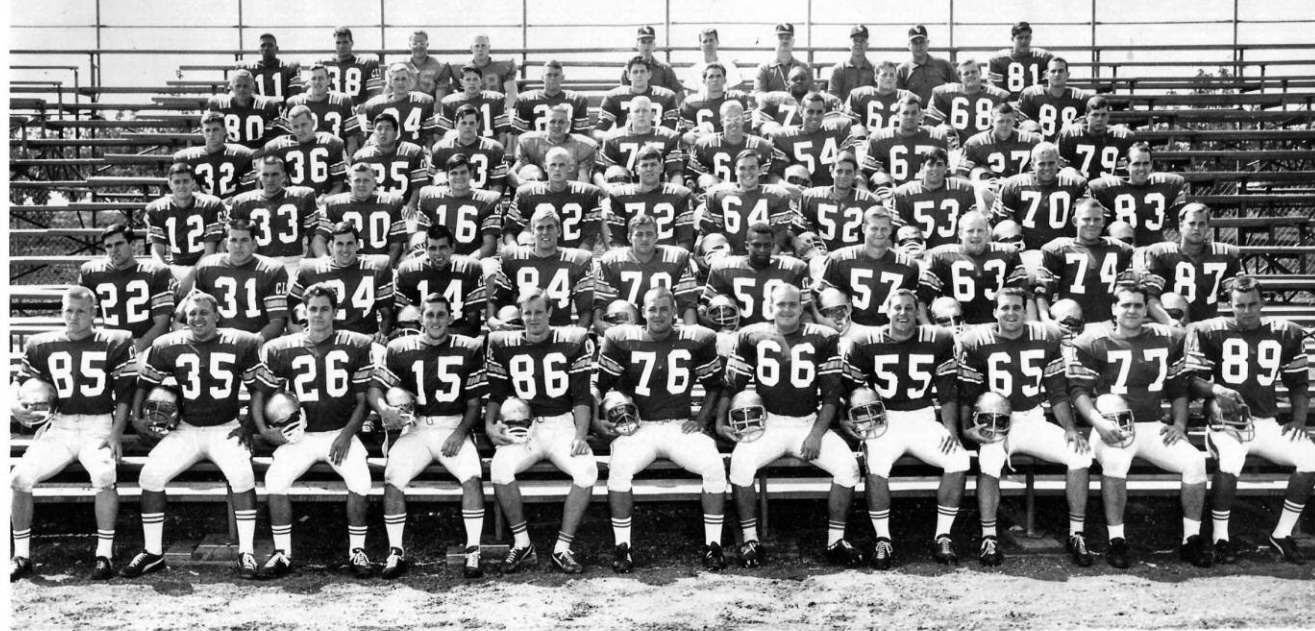
HAS BEEN ASSISTING THE COMMUNITY
OF THE CONEJO VALLEY IN ACHIEVING FINANCIAL SUCCESS

CONGRATULATIONS TO
CALIFORNIA LUTHERAN UNIVERSITY
FOR 50 YEARS OF FOOTBALL

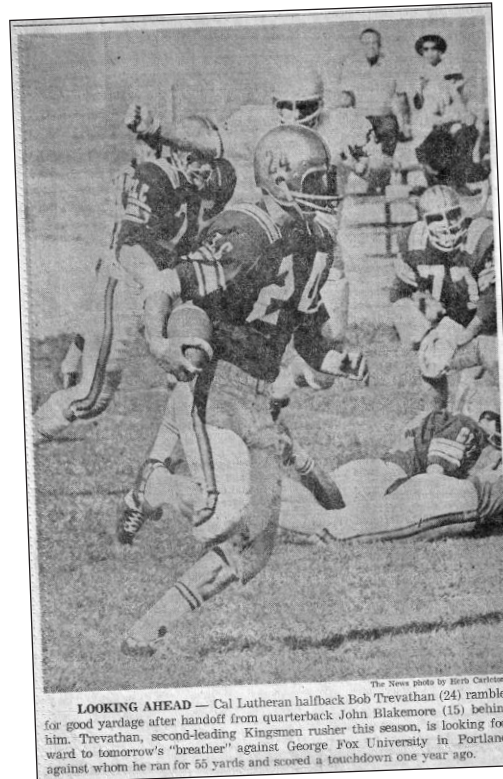
From Ragnar Storm-Larsen Class of '69 and Staff

240 E. LOMBARD STREET, STE 200 • THOUSAND OAKS, CALIFORNIA 91360
805-446-6200 • FAX 805-496-5598 • WWW.STORM-LARSEN.COM

1965 - Year of the Champions I



Front Row, left to right: Lynn Thompson, Dave Regalado, John Luewbrow, John Blakemore, Skip Mooney, John Paris, Jim Tschida, Cary Washburn, Steve Sutherland, Paul Harmon, Steve Proehl.
 Row Two: Paul Phipps, Jeff Lampos, Bob Trevathan, LeRoy Acebedo, Pete Olson, Bob Davis, Alonzo Anderson, Lee Lamb, Roger Young, Don Lee, Jerry Palmquist.
 Row Three: Bob Hendricks, Tom Arnott, Bill Rowley, Bob Lawrence, Don Sylvester, Charles Furman, Jeff Shaffer, Ralph Soderberg, Jeff Jackson, Tom Cox, Pat Dickson.
 Row Four: John Edwards, Jim Grayson, Jim Uyesaka, Bob Fulenwider, Bill Swionkowski, John Russell, Creig Tennyson, John Cockren, Tom Parker, Bill Embryee, Bill Plough.
 Row Five: Mike McLean, Tom Ecklund, Larry McHale, Bill Swain, Scott Brown, Roger Hahn, Dave Bishop, Bill Glover, Bob Bonner, Charles Helseth, Tom Stanley.
 Row Six: Donald Kinsey, Kent Gaughenbaur, John Noble, Ron Shommer, Coach Shoup, Dave Lind, Coach Hansen, Coach Engdahl, Coach Garrison, Gary Loyd.



LOOKING AHEAD — Cal Lutheran halfback Bob Trevathan (24) rambles for good yardage after handoff from quarterback John Blakemore (15) behind him. Trevathan, second-leading Kingsmen rusher this season, is looking forward to tomorrow's "breather" against George Fox University in Portland, against whom he ran for 56 yards and scored a touchdown one year ago.



State Farm®
 Providing Insurance and Financial Services
 Home Office, Bloomington, Illinois 61710



Michael C Gusick
 Agent Lic. # 0465577
 199 E Thousand Oaks Blvd, Suite 101, Thousand Oaks, CA 91360-5725
 Bus 805 497 9435 Fax 805 497 9437
 mike.gusick.b81e@statefarm.com

Goad Law Group

Diane L. Goad
 Attorney at Law
 199 E. Thousand Oaks Bl., Ste 107
 Thousand Oaks, California 91360
 Tel: 805-496-4220
 Fax: 805-496-4116
 Email: dgoad@goadlaw.com
 General Contractor License #721030



David Patton
 Financial Advisor
 Assistant Vice President - Investments
 CA Insurance Lic # OD26865

Wells Fargo Advisors, LLC
 Member FINRA/SIPC is a registered
 broker-dealer and separate non-bank
 affiliate of Wells Fargo & Company.
 Insurance products are offered
 through our affiliated non-bank
 insurance agencies.

Wells Fargo Advisors, LLC
 140 E. Thousand Oaks Blvd.
 Thousand Oaks, CA 91360
 Direct: 805-496-7630
 Fax: 805-496-6748
 Toll Free: 866-281-7436



Paula Hardy
 Brokerage Associate

Wells Fargo Advisors, LLC
 140 E. Thousand Oaks Blvd
 Thousand Oaks, CA 91360
 Direct: 805 496 6524

Wells Fargo Advisors, LLC,
 Member FINRA/SIPC is a
 registered broker-dealer and
 separate non-bank affiliate
 of Wells Fargo & Company.

Send correspondence to:
 2829 Townsgate Rd., Ste. 215
 Westlake Village, CA 91361



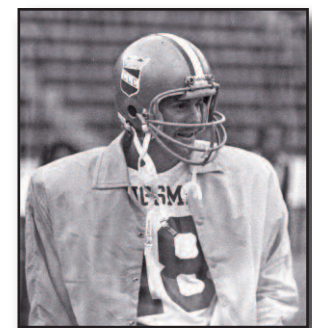
Dan Meyers
 Manager & Design Consultant
 805.372.7545
 Fax: 805.372.7844
 Email: onestoplighting@verizon.net



JAMES L. THOMPSON D.D.S., M.A.G.D.
 A Professional Corporation

General Dentistry
 Office Hours By Appointment

1000 Newbury Road, Suite 280
 Newbury Park, CA 91320
 Office: (805)375-9383
 Fax: (805)375-9386



Tim Savage
Quarterback - 1979-1980
 Loyal Friend, Loving Husband,
 Devoted Father and
 ALWAYS ...
 A Kingsmen.

Southern Wind

Orange County's Contributions to Lu Ball

by Don Kindred

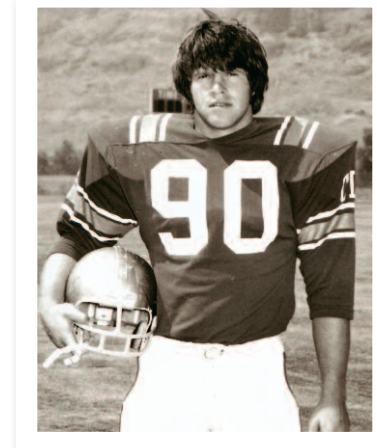
By 1967, Cal Lu was already one of the west coast's best small college football teams, having won 28 of their last 34 games. The offense was racking up 450 yards a game. But "Best of the West" was not the goal anymore for Kingsmen Head Coach Bob Shoup, it was not even a laurel to rest on. He already had his eyes set on a somewhat loftier prize ... "National Champions", now that had a certain ring to it.



Hank and Jim Bauer hailed from Anaheim

Raising the bar for the team, would take even harder work by the already overworked staff, there were improvements needed in equipment and facilities and more funds would have to be squeezed from the administration's teetering budget. But most importantly, he would need talent. He needed young, strong, hungry warriors who would feed off the Lu's relatively new traditions and help raise the program up to one worthy of a national stage. Coach Shoup knew where he could find them, he went south.

Like modern day Superbowl MVP's, he went to Disneyland. Well, he went to the Disneyland Hotel, and rented a conference room in an attempt to till the fertile soil of the emerging football empire of Orange County. The expanding suburbs had developed into an untapped reservoir of ball players. There was a new generation of kids who had grown up among the orange groves and were weaned on Little League baseball and Pop Warner football and good



Richard and Brian Kelley came north from Fullerton.

coaches and involved parents. Shoup sent out hundreds of letters to OC prep athletes, inviting them to share snacks and soda pop and hear about an enchanted football kingdom in the Conejo Valley. When he'd asked the administration for a couple hundred bucks to cover the food, he hoped to be speaking to maybe 30 or 40 prospects. Instead, his presentation was witnessed by almost 200 senior athletes that all shared a similar passion for pigskin. And all they knew about Cal Lu was that the Dallas Cowboys trained there.

Accompanied by coach Don Garrison and a slide show, Shoup knew he had to give a hell of a speech. He had a tough sell, Cal Lutheran didn't even have a stadium, the fans that might come to watch would be sitting on bleachers that had been picked up in rented trucks from Pasadena and had to be returned before the Rose Parade. The weight room was a former chicken coop, smaller than the ones these kids had trained on in high school. As far as wild college experiences might go, Thousand Oaks pretty much slept thru most of the 60s, the closest form of entertainment would be a unique little zoo called Jungland, or a campus Yam Yad gone bad

THOUSAND OAKS LIONS AND CONEJO VALLEY LIONS
join Coach Shoup of
CALIFORNIA LUTHERAN COLLEGE
in saluting these 5 ALL-STARS

Who Will Be Playing Next Year For
The West Coast's BEST in Small College Football

THE 'KINGSMEN' HOLD THE BEST RECORD ON THE WEST COAST
[C.L.C. Has Won 28 of Their Last 34 Games]

BEST PUNTER IN NATION ALL-AMERICAN GARY LOYD

BEST OFFENSIVE TEAM IN THE NATION 450 YARDS PER GAME!

OTHER OUTSTANDING ORANGE COUNTY PLAYERS AT C.L.C.

BOB KOGLER All-Star Champions J.C. All Eastern Conference	MIKE HUNKINS All League - Kettle Newport Harbor High	DAVE HALL All League - Tustin All-Star - Marine
MIKE PIPER All League - San Clemente	BILL ROTHENBERGER Garden Grove League Lineman of the Year	SAM BUZZEE All League - Orange
RALPH SODERBERG All League - Magallona	MATT MONTGOMERY All League - Lowell	KARL SENSE All-Star - Nimitz S.A.V.
KRIS VAN HOOK Casta Mesa High	BRUCE NELSON All County - Garden Grove High and Orange Coast College	JIM BEALS All-Star - Nimitz S.A.V.
TIM WEIR J.C. All Eastern Conference	DOUG JOHNSON Orange Coast College	BOB WILKINS J.C. All Eastern Conference
RICHARD ANDRADE J.C. All Eastern Conference		CHUCK PERRY All-Star - Estancia

Even the Dallas Cowboys choose California Lutheran College because it was "The BEST training camp in the nation". So choose C.L.C. and get the BEST!

Program from the 1968 All Star Game.

in the spring. Oh, and we didn't exactly offer scholarships ... but, by the way ... it's the summer home of the Dallas Cowboys.

What he did have to sell was a dream. To those who had tasted the glory that rose from the well-earned victory of a hard-fought battle, he offered a chance for more. A chance to be the best. He wanted the few, the proud, the brave ones who might end up warming the bleachers of a bigger school to think of a starring role in a smaller venue. He offered them a chance to play as freshmen, and a chance to reign as champions, National Champions, to wear the crown that says they were the best small college football team in America.

And they heeded his call. Of the 66 Best players in Orange County, 10 were admitted to CLC, with over 30 applying. Among them, seven prominent athletes from the Southern California All-Star Team ended up on the Kingsmen team; including Jim Bauer, Richard Kelley, Gary McGinnis, Mike Hunkins, Pat Shanley, Matt Montgomery and John Russell.

The Kingsmen, true to Shoup's word, were National Champions in three short years ... oh and, so were the Dallas Cowboys.



John Kindred, Anaheim
Harry Hedrick, Garden Grove '77

1971 "Year of the Champions"



- FIRST ROW: Kelley, R., Bauer, Hunkins, McGinnis, Cvijanovich Sam, Allen, Boothe, Tollefson, Carter, Calloway, Burties.
- SECOND ROW: Young, Sheppard, Hernandez, McGuire, Mannings, Hengst, Miller, Green D., Reyes, McIlroy, Drake.
- THIRD ROW: West, Munoz, D'Errico, Taylor, Erickson, Brightwell, Nelson, Kelley B., Marinelli, Markiewicz.
- FOURTH ROW: Downen, Hunter, Layne, Saunders, Calderone, Uebelhardt, Ruiz, Synder, Ramsey, Spieser, Clark D.
- FIFTH ROW: Bortolin, Barney, Cvijanovich S., Spray, Green A., Hansen, Weber, Thompson, Green D., Garrison.
- SIXTH ROW: Ayers, Carter, Coach Shoup, Clark, Branham, Howard, Shoup R., Kallas, Garrison J.

At this point in the season, California Lutheran College's record (3-0-2) began to draw votes in the NAIA ratings game. Ahead were 2 state schools, and tough Pacific Lutheran University. California Lutheran College 40, Sonoma State College 6. After an off week, CLC flew north for a return encounter with Sonoma State and blasted the Cossacks with a 35-point first half and then eased up. Ahead loomed Cal Lutheran's first major university game. California Lutheran College 22, Cal State Los Angeles 7. A spirited but mistake-prone CLC shocked the haughty Diablos in a wierd twilight single header that was played Friday at four o'clock at LA's request. The tension mounted as both Cal Western and Claremont lost and CLC moved into the top six nationally and eligible for a play-off spot. The team voted to give up the Las Vegas game and risk all on one roll of the dice vs. league champion Pacific Lutheran University. California Lutheran College 27 Pacific Lutheran University 6. Homecoming + Big game = Victory. The Kingsmen fought tough PLU all the way and used familiar weapons, the pass interception and fumble recovery to win the "must game". The NAIA invitation came on Sunday afternoon. The community of Thousand Oaks outbid Butte, Montana and California Lutheran College became the host to Montana Tech. California Lutheran College 34, Montana Tech 6. As usual Cal Lutheran was underdog in the four team play-off. Tech had the best running attack and highest scorer in the U.S. When it was over the CLC defense Sam Cvijanovich and Gary McGinnis reigned supreme and the oft-maligned Kingsmen offense rolled up the 500 yards plus. NBC showed CLC to the world, Jim Murray wrote about it and

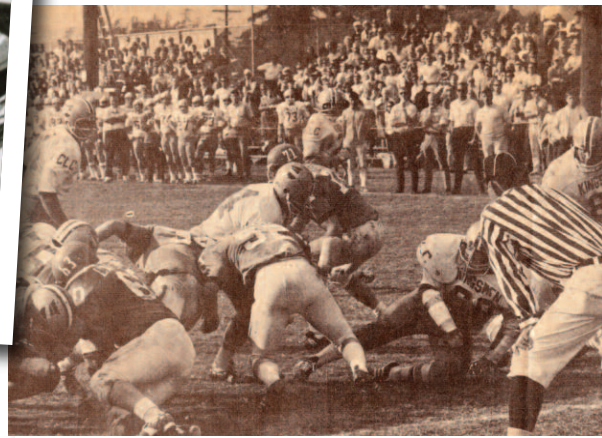
suddenly Cal Lutheran was everybody's hero - except in the Pennsylvania. California Lutheran College 34, Westminster 14. The Titans are/were a legend in their own time in the East. The tough kids from the coal mines and the steel mills playing for a 120-year-old school, with a bona fide giant for a coach. Defending champs, rated number one all year, undefeated in 24 games, Westminster seemed like a sure winner. A funny thing happened to the Titans on their way to the championship.

they lost. The Kingsmen wore the crown and it was no fluke. In the end the star Titan runner was on the bench, the cocky quarterback was throwing ducks and the vaunted Westminster team was learning a lot about being behind with time running out. A lesson Cal Lutheran learned early in September. The headlines Sunday read "CLC No. 1" in type last used on V-J day. The country read it on the wire services, heard it on four radio broadcasts and saw it in color on NBC. The surfer kids from Southern California, playing for a tradition-less church school on government loans and \$400 "scholarships" were national champions. Stories like that wouldn't make a pilot show on ABC-TV ... too unbelievable.



Reprinted from the Campanile, 1972

Jim Bauer



Jim Bauer, the athletic director at Knight of Palmdale and a long-time respected figure in Golden League football circles, died of a heart attack this morning.

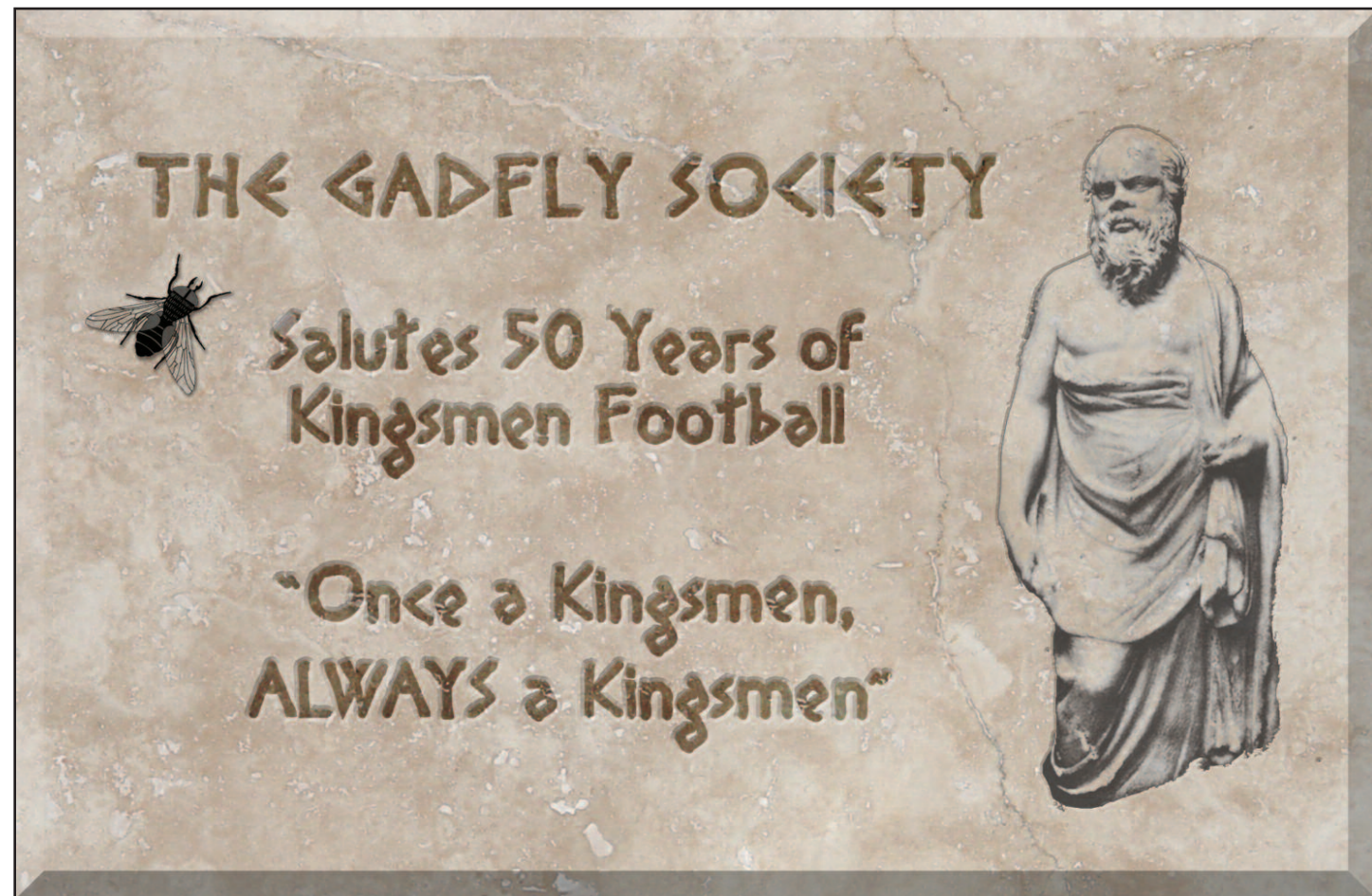
"He was a great man," said Antelope Valley coach Brett Pape, one of Bauer's closest friends. "We coached against each other for a long time, but more than we built a good relationship and spent a lot of time together. We were real close."

Bauer, who's brother, Hank, played in NFL for the San Diego Chargers, was a long-time coach at Littlerock before leaving in 2004

to become athletic director and football coach at Knight. He coached the football team for three seasons through 2007 and remained the athletic director.

The Bauer name is more than a memory around Cal Lutheran. Hank's older brother Jim, 35, played at the college from 1968 through 1971, and was a defensive coordinator and special teams coach in 1978.

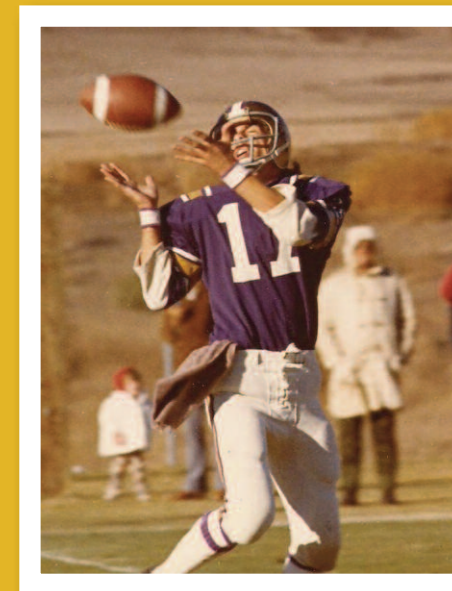
Thanks to the Bauer brothers, successful special teams have become something of a specialty at CLC.



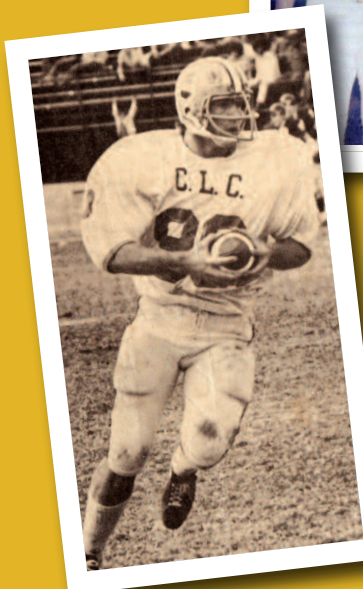
Kingsmen Gone Pro



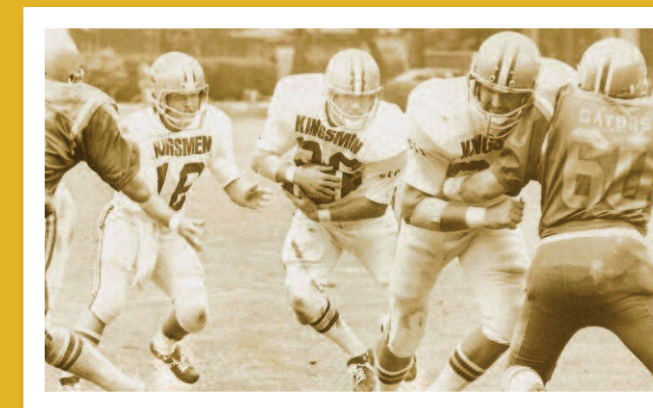
Sam Cvijanovich, Left



Mike Sheppard



Brian Kelley



Hank Bauer



Gary Loyd

That Championship Day

By STEVE HENSON, Times Staff Writer

The week before Cal Lutheran's NAIA Division II championship game with Westminster College, rain turned the brush-covered hills surrounding the school from brown to green. The sky was blue, the air crisp.

The game was played in front of NBC cameras—Tommy Hawkins and Ross Porter did the broadcast on a tape delay—and nearly 10,000 spectators at Mt. Clef field.

"A perfect day to play for a national championship," CLC Coach Bob Shoup recalled. His team won, 30-14.

The Times' Jim Murray, whose daughter Pam was a CLC student in 1971, captured the small college flavor of the event in a column the following week:

"The traffic began to build as early as 10 minutes before the game. . . . The marching band looked more like a combo. . . . No writers flew in from the East to cover it, but several little girls on horseback watched from the end zone. The campus was hardly in a ferment. Guitar music sailed down from the dormitory after kickoff."

Thousand Oaks in 1971 was not the bustling suburb of more than 100,000 people it is today. A rough-and-tumble cowboy flavor permeated the

community of 40,000 long before the image was fashionable.

CLC, in the northwest corner of town, was virtually isolated by hills. Folks rode by the campus on horseback on their way to the Santa Rosa Valley or stopped under a shady oak for a quiet picnic.

"You could stand on the football field and not see one house," recalls Gene Uebelhart.

Several of the players formed a rugby team during the spring. "We loved the physical contact," Sam Cvijanovich says.

Forming a traveling kazoo band was another way to pass the time and the 110-member group had an appearance on the Steve Allen Show.

"Few of us had cars," recalls Jim Bauer. "We were stuck in T.O. together and tried to make the best of it. Redneck cowboys played beside blacks, Vietnam veterans played next to draft card burners."

"There was a social and political awareness you don't see anymore. The kids today, I love 'em, but the biggest topic of discussion is what they're going to wear to the Halloween dance. Compared to the way we were, they're vanilla pudding."

Los Angeles Times
Sports

BUSINESS & FINANCE

CC PART III †

FRIDAY, DECEMBER 5, 1975

JIM MURRAY

All the Kingsmen

He's clearly one of the game's four-star coaches. He'll be playing for his second national championship in four years Saturday. In 14 years, he's won 100 games. He's lost only 30.

He's done this without Heisman Trophy winners, without bonus babies, big staffs, alumni slush funds, massive junior college transfers. His squad is not a pipeline to the pros. Only one of his boys stuck it out in the NFL.

He doesn't have the resources of a major state university with a student body the size of Cincinnati. His school has 1,100 students. He does not have the luxury of a long and glorious tradition. The school is only 15 years old. The football program is one year less.

★

You would think, all things considered, Robert Shoup would be being mentioned in the same breath with Knute Rockne, Vince Lombardi, Hurry Up Yost or Pop Warner. You would think, at least, that NFL expansion franchises would be unloading buckets of money and promises of fringe benefits on his front porch. You would think Woody or Bear or John would be studying films of his games in secret.

Bob Shoup was a 5-9, 150-pound quarterback at UC Santa Barbara in his playing days. He was a high school coach when California Lutheran formed its campus in Thousand Oaks in 1961. The school took up football the following year. It was Shoup's only losing year, 3-4. The team was a hodgepodge of jayvees, freshmen and varsities.

Cal Lutheran had one advantage going in: The Dallas Cowboys trained there in the summer, and coach Shoup and his tiny staff "got an advanced doctoral degree study in modern techniques of football every year" from Tom Landry and the Cowboys' pro coaches, who were generous with their time and their films.

Like Landry, Bob Shoup has a highly sophisticated system. "It was tough to coach," he admits. "But it was also tough to defend." It was also tough to man. A complicated, 15-different-"looks" offensive set cannot be made to work with a field full of clumsy students.

★

With no scholarships, no Heisman prospects, no promise of being No. 1 draft choices, how did Shoup manage to find the athletes to run his space-age attack?

"You have to realize the so-called 'blue chip' kid is gone by the time we get there. USC,

UCLA, Cal, Stanford, Notre Dame, Nebraska, Arizona and San Diego State have long since picked them off," explained Shoup. "So we have to look for other qualities. You look for team captains. They may not be 6-3, 220, but you know they have qualities that make up for it, or they wouldn't be team leaders. You are not looking for that great big stud lineman but you are looking for some inspirational-type ballplayers who might have been overlooked as too small, too slow, too modest—but who made it in their league anyway.

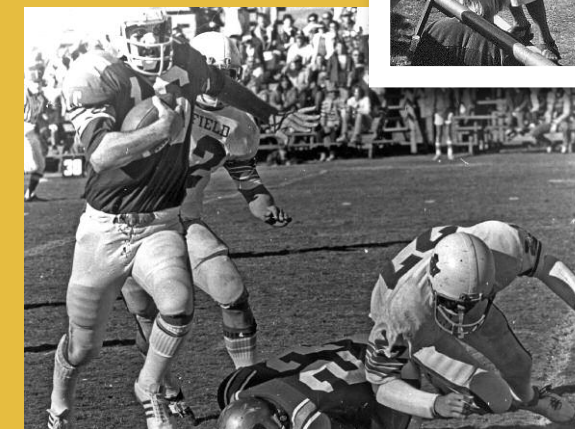
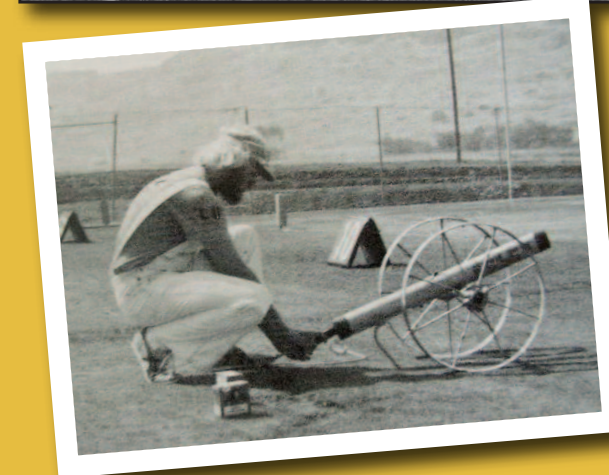
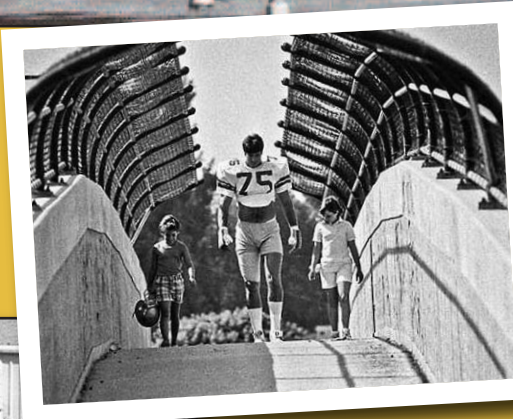
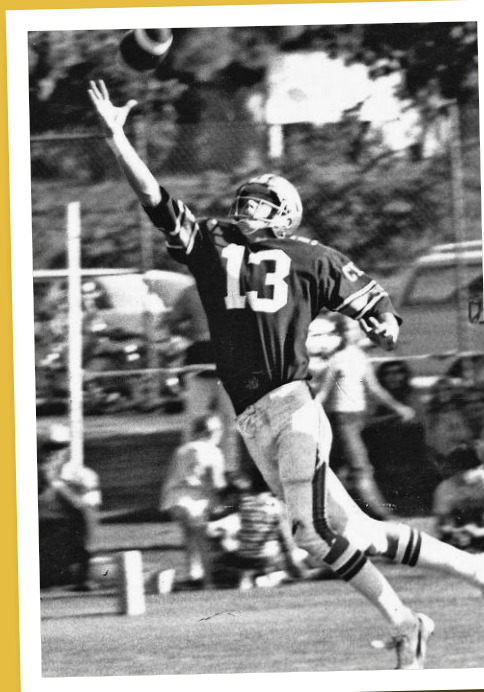
"You'd be surprised at how many good football players and good persons are overlooked in that first big sweep by the big boys. What we aim at are student-body presidents, leader-type individuals. We offer them a quality education in a family-type atmosphere, and a football squad that is, in some respects, a self-governing body."

The Kingsmen, as Cal Lutheran calls its purple-and-gold team, have won 10 and lost none this year. They also had an undefeated season in 1971 when they won the NAIA Division II (small college) national championship, and they are playing for that same championship against Texas Lutheran at Thousand Oaks Saturday at 1 o'clock.

They are, optimistically, putting in 1,000 new seats for the game, but, as usual, don't expect Howard Cosell, Frank Gifford or Alex Karras. But, the undefeated team has averaged 420 yards a game on offense and yielded only 68 yards a game on the ground (their passing defensive yardage is 125 yards per game). They have scored 350 points, giving up only 78.

I'd like to see Woody Hayes do it suiting up pure students, high school captains, and student body presidents. The only thing hard would be to do it suiting up college presidents—or bank presidents.

Lu Ball



A New Emphasis Built on a Strong Tradition

California Lutheran University joined the Southern California Intercollegiate Athletic Conference in the fall of 1988. The SCIAC is one of the oldest athletic conferences in the country, dating back to 1915.

Membership in the SCIAC includes such prestigious academic institutions as Claremont College, Occidental College, Pomona-Pitzer College, University of La Verne, University of Redlands, Whittier College and the California Institute of Technology. The fundamental principle of the SCIAC is the promotion of the highest ideals of amateur sports in an environment of high academic standards. Participation in the SCIAC will include changing CLU's national affiliation from the NAIA and NCAA Division II to NCAA Division III.

The transition from membership in the Golden State Athletic Conference and Western Football Conference will take approximately two to three years. Therefore, CLU will compete as an independent in the NAIA and NCAA Division II until the transition is complete. CLU's teams will continue to compete for district, regional and national championships in the NAIA.

One of the benefits of the new conference is that CLU will broaden its intercollegiate sports program to include men's and women's swimming and men's water polo when the proposed new physical education complex is completed.

Additionally, junior varsity sports will be added as student interest warrants their addition.

Currently, CLU competes in eight men's sports - baseball, basketball, cross country, football, golf, soccer, tennis and track; while the women compete in seven sports - basketball, cross country, soccer, softball, tennis, track and volleyball.

Another benefit of the SCIAC membership is that the long-awaited physical education complex with a new swimming pool must be completed for membership in the SCIAC.

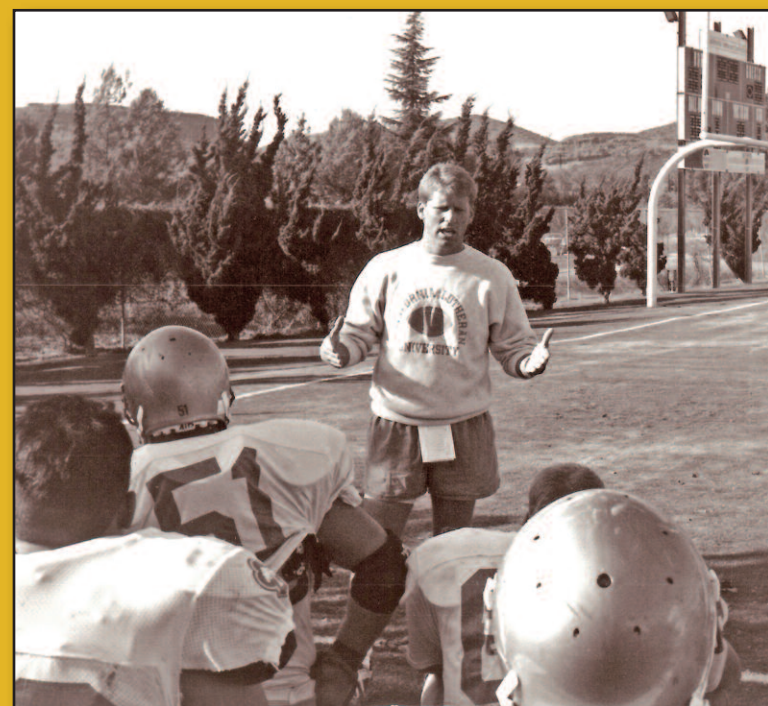
CLU has had a long tradition of a strong intercollegiate athletic program. This, plus the high academic rating of the University and quality Christian education that is offered make it an institution that every student-athlete should consider for his or her education.

"We will continue to strive towards the excellence in the academics and athletics that we have achieved in the past. CLU will continue to be a leader on and off the field."

Dr. Robert Doering
CLU Directory of Athletics



1992 Scott Squires - "Coach of the Year"



The Tradition Continues Coach McEnroe

In April 2007, Ben McEnroe (Class of '93) became the first alumni football coach to lead the Kingsmen. One of the primary goals McEnroe set for the program was to embrace the rich history and tradition of CLC/CLU football. Alumni players are welcomed inside the locker room before every game, and Coach Shoup addresses the team before the Homecoming contest. At the conclusion of the 2007 football awards banquet, Coach Shoup presented Coach McEnroe with a "new" pair of Blue Slippers that the team has embraced, and the Kingsmen are 23-6 since the Slippers returned to the locker room.

The last four seasons have been the most successful in CLU's NCAA era. In that span, the Kingsmen have won 74% of their games, including three Southern California Intercollegiate Athletic Conference (SCIAC) championships and the first two NCAA playoff appearances in school history. CLU has not lost a road game in the SCIAC since 2006, is 22-2 vs. the SCIAC since 2007, and is riding a 14 game conference winning streak and has won 11 straight games at home.

In 2011, CLU will return 18 starters from the 2010 SCIAC championship squad, including two preseason All-Americans and 10 All-SCIAC honorees. The offense returns 10 starters, including All-SCIAC Quarterback Jacob Laudenslayer and All-SCIAC Wide Receiver Eric Rogers, who broke the school single-game receiving record in the 2010 NCAA playoffs. Defensively, CLU will have one of the best defensive backfields in the nation, led by 2010 All-American Cornerback Luis Villavicencio and 2009 All-West Region Cornerback Justin Haulcy-Bateman. The Kingsmen are ranked in both the Lindy's Football Preview magazine (#10 nationally) and The Sporting News (#17 nationally) preseason polls. The schedule features a matchup of the two highest ranked teams to play each other in 2011 when #10 CLU travels to Oregon to face #6 Linfield. The Kingsmen will also face traditional rival and conference competitor #22 Redlands at home on October 1. A rematch of the Kingsmen's only regular season loss of 2010 takes place in Southern California on September 17 when CLU hosts PLU. SCIAC games versus Whittier (October 8) and the Homecoming tilt against Claremont-Mudd (October 29) round out the home schedule.

The opening of William Rolland Stadium this fall marks a new era in CLU Football. The facility, which will have three times the seating capacity of Mt. Clef Stadium, allows the Kingsmen to host NCAA championship events beginning with the 2011 season in both football and soccer. William Rolland Stadium will house the CLU Football offices and meeting rooms, boast one of the best locker rooms in NCAA Division III football, and will have an equipment room, athletic training room, and art gallery.



Playoff Rematch in Store as CLU Welcomes No. 4 Linfield



Last year the CLU football season came to an end with a 38-17 playoff loss at Linfield College and the Kingsmen will open their 2010 campaign against the same Wildcats team.

Linfield out gained the Kingsmen 363 to 220 and made the difference on the ground as the Wildcats rushed for 268 yards compared to CLU's 65 rushing yards. The game last November started out CLU's way as the Kingsmen recovered a fumble by Linfield quarterback Aaron Boehme on the first play from scrimmage that resulted in a Jackson Damron field goal to give the Kingsmen a 3-0 lead. The Wildcats responded with 31 unanswered points to lead 31-3 midway through the second quarter. A pair of Brian Stuart touchdowns gave CLU hope and cut the deficit to 31-17 at the half, but there was just one score by either team in the rest of the game as the Wildcats prevailed 38-17.

After Linfield defeated the Kingsmen, it continued its run all the way to the NCAA Division III Semifinals and lost to eventual national champion Wisconsin-Whitewater 27-17. This season the Wildcats welcome back Boehme at quarterback and the senior is coming off of a 3,261 yard, 33-touchdown junior year. Also returning to the Linfield lineup is running back Aaron Williams who led the Northwest Conference with 852 rushing yards a year ago including 125 against the Kingsmen.

The two schools will meet for the fourth time ever today and the contest will be the first non-postseason matchup in the all-time series. The schools faced each other in the NAIA playoffs in 1977 and 1982.

Cal Lutheran will have a new look in its backfield as Jake Laudenslayer, a junior transfer from Marshall University, will take over the quarterback controls that Jericho Toilolo manned for the last three seasons. With the loss of running back Brian Stuart, who rushed for 1,025 yards and 16 touchdowns en route to the SCIAC Offensive

Player of the Year award last year, CLU will likely look to a committee approach in the run-game this season. Today, junior Bobby Rodrigues will draw the start at running back with Daniel Mosier listed as his backup.

Defensive end Jeff Miller transferred to Cal Lutheran via UCLA and the senior will look to become an impact player for the Kingsmen in 2010. The Westlake High School graduate went to UCLA as a defensive lineman and was eventually switched to tight end. Now at CLU, Miller returns to the defensive line.



Overall the Kingsmen offense features seven new starters this year and the defense will have eight new faces in the starting lineup. One area where CLU will look the same will be in the kicking game. Junior placekicker Jackson Damron is back for his third season with the team and has earned All-SCIAC honors in the previous two. Senior Josh Oosterhof will handle the punting duties for the third consecutive season and he earned All-SCIAC honors in 2009.

A look inside the box score...

Nov. 21, 2009: Linfield 38, CLU 17

	CLU	LC
First Downs	19	18
Rushing Yards	65	249
Passing Yards	155	114
Total Yards	220	363
Fumbles: Number-Lost	1-0	2-2
Penalties: Number-Yards	1-5	4-32
Interceptions	1	4
Possession Time	31:55	28:05
Third-Down Conversions	4-14	3-9
Red-Zone Scores-Chances	3-5	3-3
Sacks By: Number-Yards	1-4	8-44
Field Goals	1-1	1-2

Alma Mater

*Oh, summon your sons and daughters,
Your banners and flags unfold,
Call them to Alma Mater,
The violet and the gold,
California Lutheran,
College of our dreams,
Upon whose crested summits
Sunbeams dance and gleam.*

*Oh, summon your sons and daughters,
The 'circling hills enfold,
Near deep Pacific waters,
The violet and the gold.
Your love of freedom cherish,
Your love of truth prevails,
Your love of Christ merit,
Alma Mater, Hail! All Hail! All Hail!*

Fight Song

Hail The Kingsmen

*Hail Kinsmen! Hail Kingsmen!
Forwards into battle to the Kingsmen!
Roaring out again to meet the foe.
Stand and cheer as they appear.
Every loyal son will bid them go.
Throughout the land our loyal band
of Kingsmen raise thier colors high
for all to see. So! Give your all today -
And once again we'll say -
It's victory for CLC.
Hail Kingsmen! Hail Kingsmen!
Fight on to victory.*

Kingsmen Gold

*They've been through hell.
Grueling, full-contact days
in the heat of August,
where temperatures soared
past bursting in the
sweat-soaked confines of
the gold-caged helmet.*

*They played a savage sport,
modern day gladiators
in brutal contests
of controlled violence.
Through blood, bruises and
broken bones they battled
till the crisp fall days
became cold winter nights.*

*Pride, glory and honor:
the gold for which they fought.
The soul-stirring sensation
a man feels,
when he turns at the final gun
to a hometown stand,
raises his battered,
earth-stained fist to heaven,
and becomes worthy to hold
the world's most coveted title ...
Champion.*

- Don Kindred '80

The Songs of CLU



California Lutheran University

Kingsmen Football Records

1962 3-4	1979 7-2-1	1996 4-5
1963 5-4	1980 7-2-1	1997 5-4
1964 6-4	1981 8-2	1998 5-4
1965 8-1	1982 9-2	1999 3-6
1966 8-2	1983 4-6	2000 3-6
1967 7-2	1984 5-4-1	2001 6-3
1968 9-1	1985 6-5	2002 4-5
1969 8-1	1986 3-8	2003 5-4
1970 8-1-1	1987 4-6	2004 6-3
1971 8-0-2	1988 2-8	2005 8-1
1972 5-5	1989 3-6	2006 6-3
1973 6-4	1990 2-8	2007 5-4
1974 9-1	1991 6-4	2008 7-2
1975 10-1	1992 3-6	2009 8-2
1976 9-1	1993 5-4	2010 8-2
1977 9-2	1994 3-6	ALL-TIME
1978 8-2	1995 4-4-1	290-173-7

WINNINGEST COLLEGE FOOTBALL TEAMS THE LAST 50 YEARS*

Team	Record	Percentage
1. Tennessee St.	353-83-16	.799
2. Oklahoma	411-113-16	.776
3. Penn St.	378-120-14	.752
4. Ohio St.	359-120-17	.741
5. Grambling	336-113-15	.740
6. Florida A&M	363-124-14	.739
7. Alabama	389-131-23	.738
8. Notre Dame	364-135-17	.722
9. Michigan	356-135-13	.719
10. West Chester (Pa.)	316-120-13	.718
10. Cal Lutheran	175-67-6	.718
10. Texas	381-146-12	.718

*—1937-1986; all divisions, including playoffs and bowl games

Source: NCAA

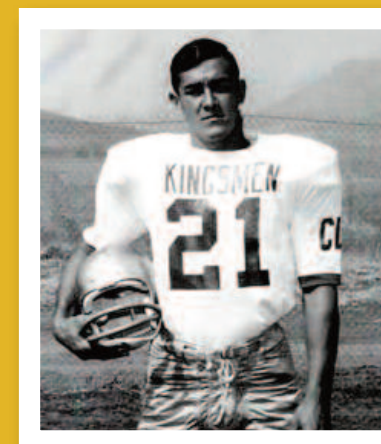
*Sports Features Syndicate, Inc.

David Spurlock, a Fighting Heart

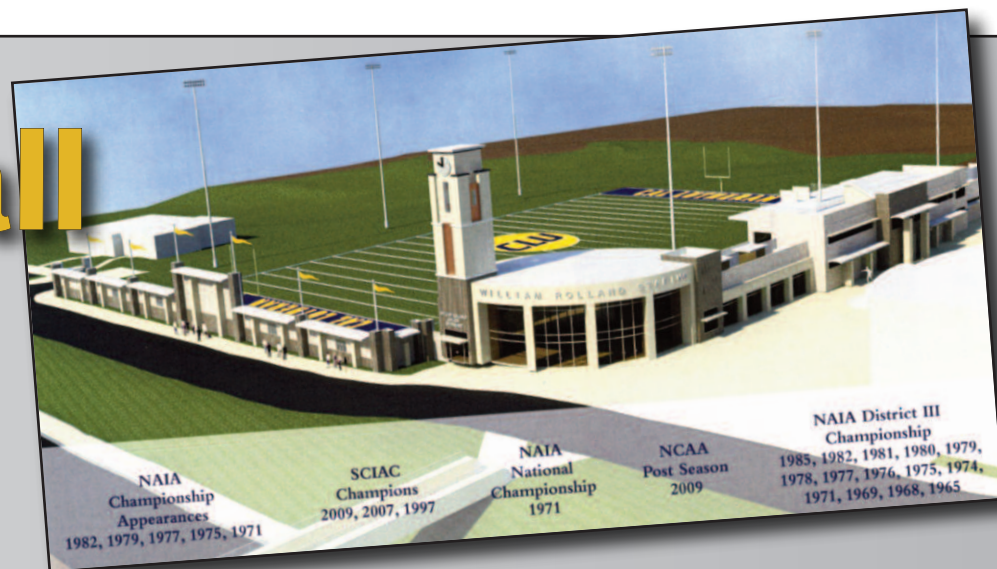
David Spurlock fought thru two major obstacles on his way to graduating from California Lutheran College and then Law School. The first was Academic as he has admitted on Probation and told he could not play football. Football was an important part of his life and it caused him to rebel against his academic world and fight being lonely and homesick while a resident student. The answer, he thought was to walk away from all these conflicts. He was persuaded to come back to CLC. His professors worked with him to salvage his work. David Spurlock of Western High School in Las Vegas was admitted to then CLC along with his brother Gary Echols and friends from his former school in California. His love is football and not playing was a hard act to swallow,

David got himself academically healthy and made the Knave football team. He suffered a serious injury and had to be hospitalized in the San Fernando Valley. His condition worsened and he developed a rare staph infection. He was listed in grave condition. The Doctors said he will only live if he has "Fighting Heart" Gradually he regained his health and was told it would be unwise to continue with football.

Within a year Spurlock was playing Varsity football and helping set a national record for pass interceptions. In one year CLC had 39 interceptions. Spurlock was the first recipient of the Fighting Heart Award. Later after deciding on Law School he distinguished himself academically and was made a member of the CLU Board of Regents. He was inducted into the CLU Athletic Hall of Fame in 2006. He is an ardent and loyal supporter of his alma mater.



Lu Ball 2011



2011 Schedule

Date	Opponent	Location	Time
Saturday, Sep 10, 2011	Linfield (OR)	Away	1:00 pm
Saturday, Sep 17, 2011	Pacific Lutheran (WA)	Home	1:00 pm
Saturday, Oct 1, 2011	Redlands-SCIAC	Home	7:00 pm
Saturday, Oct 8, 2011	Whittier-SCIAC	Home	1:00 pm
Saturday, Oct 15, 2011	La Verne-SCIAC	Away	1:00 pm
Saturday, Oct 22, 2011	Pomona-Pitzer-SCIAC	Away	7:00 pm
Saturday, Oct 29, 2011	Claremont-M-S-SCIAC	Home	1:00 pm
Saturday, Nov 5, 2011	Chapman	Away	7:00 pm
Saturday, Nov 12, 2011	Occidental-SCIAC	Away	1:00 pm

CLU Homecoming!
October 29
vs
Claremont -Mudd
1:00 pm
William Roland Stadium



CLU's Kelley Inducted into College Football Hall of Fame

Former Cal Lutheran and National Football League (NFL) standout Brian Kelley was inducted into the College Football Hall of Fame during the 2010 Enshrinement Festival on July 16-17. A team leader and ferocious hitter, Brian Kelley became California Lutheran University's first-ever College Football Hall of Fame inductee.

After leading the Kingsmen to the 1971 NAIA Division II National Championship and earning MVP honors in the victory, Kelley followed up his impressive junior campaign by being named an NAIA First Team All-America selection in 1972. The team co-captain and MVP was also selected to the NAIA District III Defensive First Team and the All-Lutheran College Defensive First Team as a senior.

Playing for the New York Giants from 1973-83, Kelley became a member of one of the most renowned linebacker corps in NFL history - the "Crunch Bunch" - with Lawrence Taylor and fellow College Football Hall of Famers Brad Van Pelt and Harry Carson. The California native was the club's leading tackler from 1974-76.

Kelley was inducted into the CLU Athletics Hall of Fame in 2003. He now works as a financial advisor and resides in New Jersey.

Above & Beyond

Ben Agajanian	Ahmanson Foundation	Roy Anderson
Lucy Ballard	Ron Barney	Dave and Margaret Betts
Don and Marty Bielke	California State Joint Legislators	George Carter
The Dallas "Cowboys"	Glenn Davis	Donald A. De Mars
Warde Dixon	Dr. Paul and Shirley Egertson	Enterprise Car Rentals
First Lutheran Eau Claire	Elton Gallegly	Ray Garcia
Dr. Quinton Garman	Stan Gerlach	Sue Gerds
Jim Gilmore	Rozella Hagen	Helms Hall
Rev. Art Henry	Jim Hill	Al and Elayne Ireland
The Janss Foundation	Kelly Seating	John Kern
L.A. Times	Kindred Associates	Tom Landry
Rev. Jim Lareva	George Lasley	Joe Leggett
Jack Lemmon	Lions Clubs	Lil Lopez
Lutheran Brotherhood	Ashie and Bill McAllister	Gaylord Mercer
Rev. Maynard Midthun	Rev Willis Moerer	Rev. Donn Moomaw
Dr. Charles Morris	Paul Mueller,	NBC Orthopedic Surgeons
Jim Murray	Pasadena City	Ross Porter
Jerry Price	Prudential Insurance	Elmer Ramsey
Bill and Cheryl Redell	Dr. Omer and Marci Reed	Dan Reeves
Ward Rineman	The Rosenbloom Family	Angelo Ruggiero
Bob Samuelson	Henry Schommer	"Tex" Schramm
Bette Schuessler	Shell Oil	Jack Siemens
Gert and Anne-Marie Sonntag	John and Florence Spann	Gene Stallings
Bob Turner	Jim Tyner Jr. and Sr.	Ollie Trumbauer
George Ullmann Sr.	Union Oil Co.	Bill Wilson Sr.
Jonathon Winters	Bob Wolter	John Woudenberg
Homer Young	Dr. C. Robert Zimmerman	UPS 1907 Foundation
Dr. Melvin Hayashi	The Pankow Family	Steve and Nancy Matlock
	United States Congress DeAnn Wahl Justensen Western Airlines	

CALIFORNIA LUTHERAN UNIVERSITY ALUMNI ASSOCIATION ATHLETIC HALL of FAME DINNER



2011 ALUMNI ASSOCIATION ATHLETIC HALL OF FAME INDUCTEES

- Mariko Coverdale '09, Women's Volleyball
- Catharine Fulkerson '82 Waltrip, Women's Cross Country and Track
- Tim Lins '85, Football
- Justin Muth '01, Men's Basketball
- Doug Rihn '76, Men's Track and Field, Football

BASEBALL

Jim Huchtausen
Steve Trumbauer
Al Kempfert
Andrew Barber

BASKETBALL

Gary Bowman
Jeff DeLaveaga
Steve DeLaveaga
Steve Gross
Mike "Spider" Webb

BASKETBALL

Kimberly Peppi-Kuenn

TRACK

Beth Rockliffe-Owens

FOOTBALL

Fredrick Kemp
Brian Kelley
Sam Cvijanovich
Hank Bauer
Dave Regalado

FOOTBALL

Gary Loyd
Fredrik Nanhed
David Wigton
David Spurlock
Thomas Bonds

FOOTBALL

Michael Hagen
Mike Sheppard
Charlie McShane
Jeff Shea

GOLF

David Richardson
Greg Osbourne

SOCCER

Dave Salzwedel
Willie Ruiz
Aluede Okokhere

SOCCER

Rachael Wackerman-Morrell
Kimberly Holeman
Jill (Gallegos) Jaglowski
Holly Roepke

SOFTBALL

Heidi Stevens
DeeAndra (Pilkington)

TENNIS

Mark Jessop-Ellis
Eugene Karimov

TRACK

Don Weeks
Troy Kuretich
Jeff Kennedy
Lavannes Rose
Lindahl "Lindy" Lucas
Darren Bernard

VOLLEYBALL

Cindie (Jorgensen) Van Noy
Tracy (Little) Schuetz

WRESTLING

Chuck La Gamma
Dr. Rex Baumgartner
Steven Magruder

TEAM

1971 Championship Football Team
1976-1977 4x100 Relay

COACHES

Bob Shoup
Don Garrison
Dr. Nena Amundson
Donald Green Sr
Al Schoenberger
George Kuntz

MERITORIUS

Orville Dahl, Ph.D
Luther Schwich
Karsten Lundring
Dr. John Tomec
Eldon Hagen
Dr. James G. Kallas

COACHES

Rich Hill
Mike Dunlap
Donald Hyatt
James Park